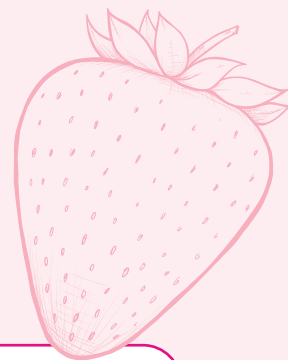


Activity 5.2: Flavour chemistry



The final step to making ice cream yum is to have some fun with flavour!

Food scientists use flavour chemistry to mix ingredients that taste good together and help each other shine. This is called flavour pairing.

Using the flavour cards in your kit, your challenge is to find a tasty flavour pairing for each category and explain why it's a match.

Your categories:

1. Pink flavour cards: Classic combo
2. Teal flavour cards: Sweet and salty
3. Yellow flavour cards: Weird but works

Mix and match!

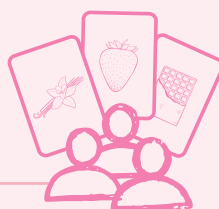
Step 1

Collect a flavour card from your kaiako.



Step 2

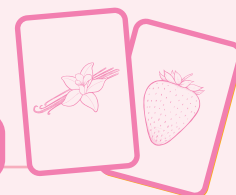
Find classmates with the same category as you to form a rōpū.



Tasty tip! You might like to test some of these flavours for yourself by bringing in some ingredients from home.

Step 3

When your kaiako says go, find a classmate in your rōpū that you think has a good flavour match to your card.



Step 4

Once everyone has found a match, each pair should take a turn explaining why their cards make a good flavour pairing.



Step 5

Swap categories with another rōpū and play again! Each time, try to create a flavour match that hasn't been done before.



Make your ice cream yum!

What did you learn from this activity about flavour pairings?



What flavour pairings could you use in your ice cream?

Put as many ideas as you can think of! You might like to create a flavour inspired by your favourite place, memory or culture.

Think about your base flavour, and any add-ins you could include for texture. Eg, could you add biscuits or pretzels?



Our final flavour

As a rōpū, choose your final flavour from all your ideas.

Our final flavour is

We chose it because

