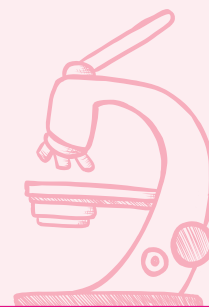


Activity 2.1: Ice crystal investigation

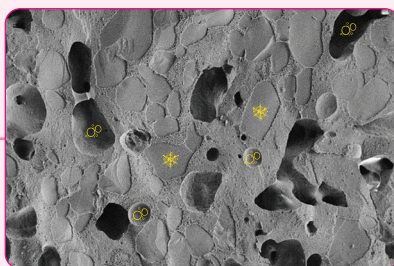


Can you tell how creamy ice cream is just by looking suuuuper close? Let's zoom in and see!

Scientists use special tools called microscopes to look at ice cream really closely and learn more about the state of matter inside it. This helps give them clues on its creaminess!

Ice cream key

In your rōpū, look at the microscopic images of ice crystals in ice cream. Then, work together to answer the pātai in the table, and give each ice cream image a creaminess ranking from 1 (very icy) to 3 (very creamy).



Ice crystals



Air bubbles



Ice crystal images

Are the ice crystals
large or small?

Are the ice crystals
even or uneven?

Creaminess ranking 1-3

1 (very icy)
3 (very creamy)

Image
one

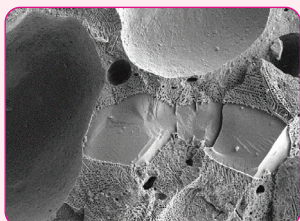


Image
two

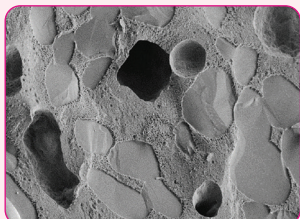
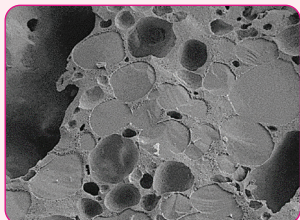


Image
three



Which ice cream image is the creamiest? Why?



Which ice cream image is the least creamy? Why?



What do these images tell us about how ice crystals impact creaminess?

