

Think about what you want to achieve in the Ice Cream Challenge

The big problem you need to solve is:

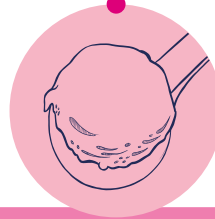
I wonder what makes ice cream yum?

To solve this problem, you're going to explore three goals.

Work with your rōpū to investigate these goals and how they might help with your ice cream.



Goal 1: Creamy



Goal 2: Scoopable



Goal 3: Flavourful

Observe

What do you notice about ice cream?

Think about ice cream you've eaten before. Tick the options that made the ice cream yum.

Creamy

- Icy
- Smooth

- Light
- Rich

- Thin
- Thick

Scoopable

- Hard
- Soft

- Falls apart
- Stays together

- Melts quickly
- Melts slowly

Flavourful

- One flavour
- Multiple flavours

- Weak taste
- Strong taste

- Taste fades quickly
- Taste stays in your mouth

Other ideas:

Why do these things make ice cream yum?

Look at the options you circled. Think about why these things are important.

We think creamy ice cream is important because...

We think scoopable ice cream is important because...

We think flavourful ice cream is important because...

Reflect

What have you discovered about yum ice cream?

Think about everything you've learned. Then, think about how you could investigate these ideas in your own ice cream.

We're most looking forward to exploring:

- Goal 1: Creamy Goal 2: Scoopable Goal 3: Flavourful

Because:

To make yum ice cream, you need all three goals because...

Things to think about:

Any allergies?

Any flavours people dislike?

Any flavours everyone likes?

We will make an ice cream that is:

Creamy

Scoopable

Yum!

How will we know if we succeeded?