



Wonder Project

Water Challenge

Activity 4.2: Create

Create a pipe prototype to connect wai to your hapori.

Watch the 'create' video, then use your wai network plan to construct your prototype.

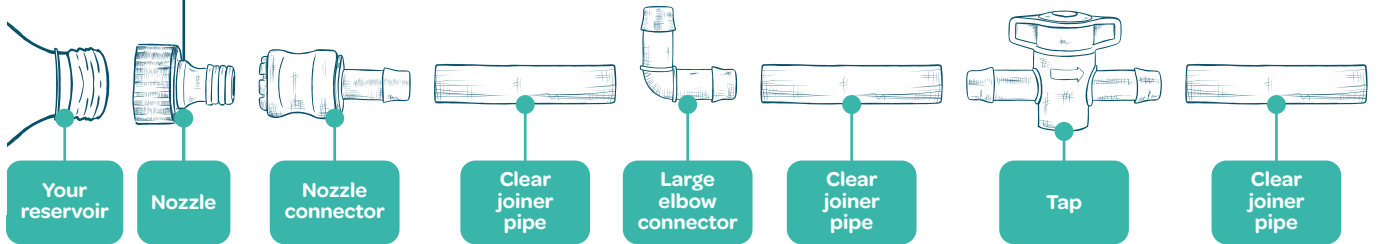
Create your prototype

Step 1

Create the start of your network.

You'll need:

- Nozzle
- 3 x clear joiner pipes
- Tap
- Your reservoir from the clean activity
- Nozzle connector
- Large elbow connector
- "Wai network" set
- Resources to support wai network stability (boxes, tape, bulldog clips)



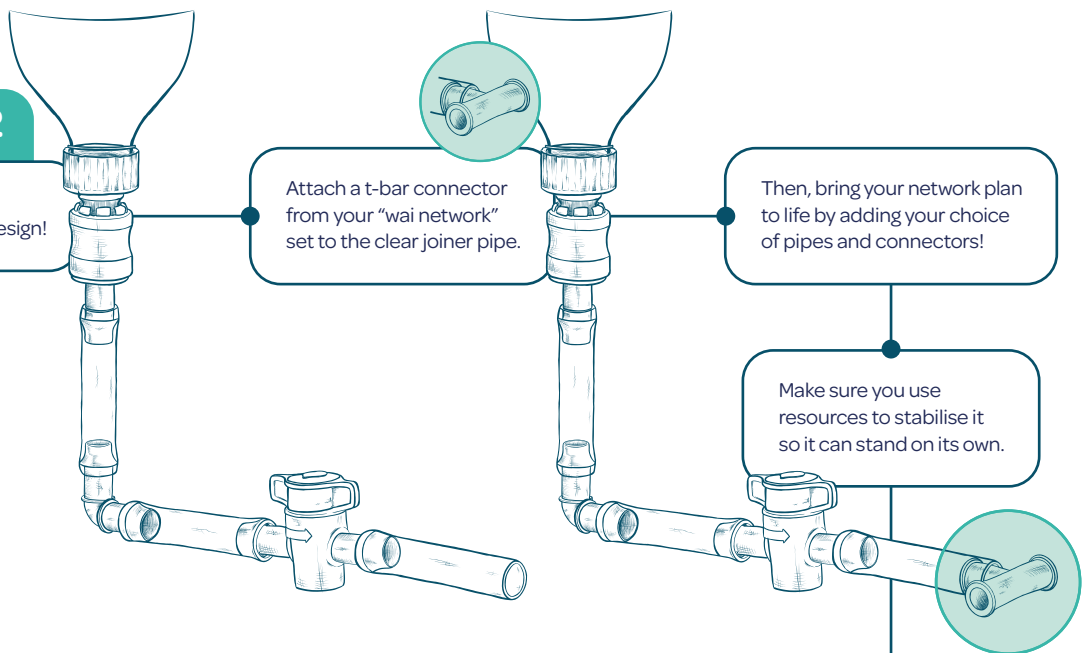
Step 2

Create your prototype design!

Attach a t-bar connector from your "wai network" set to the clear joiner pipe.

Then, bring your network plan to life by adding your choice of pipes and connectors!

Make sure you use resources to stabilise it so it can stand on its own.



Karawhiau koutou!